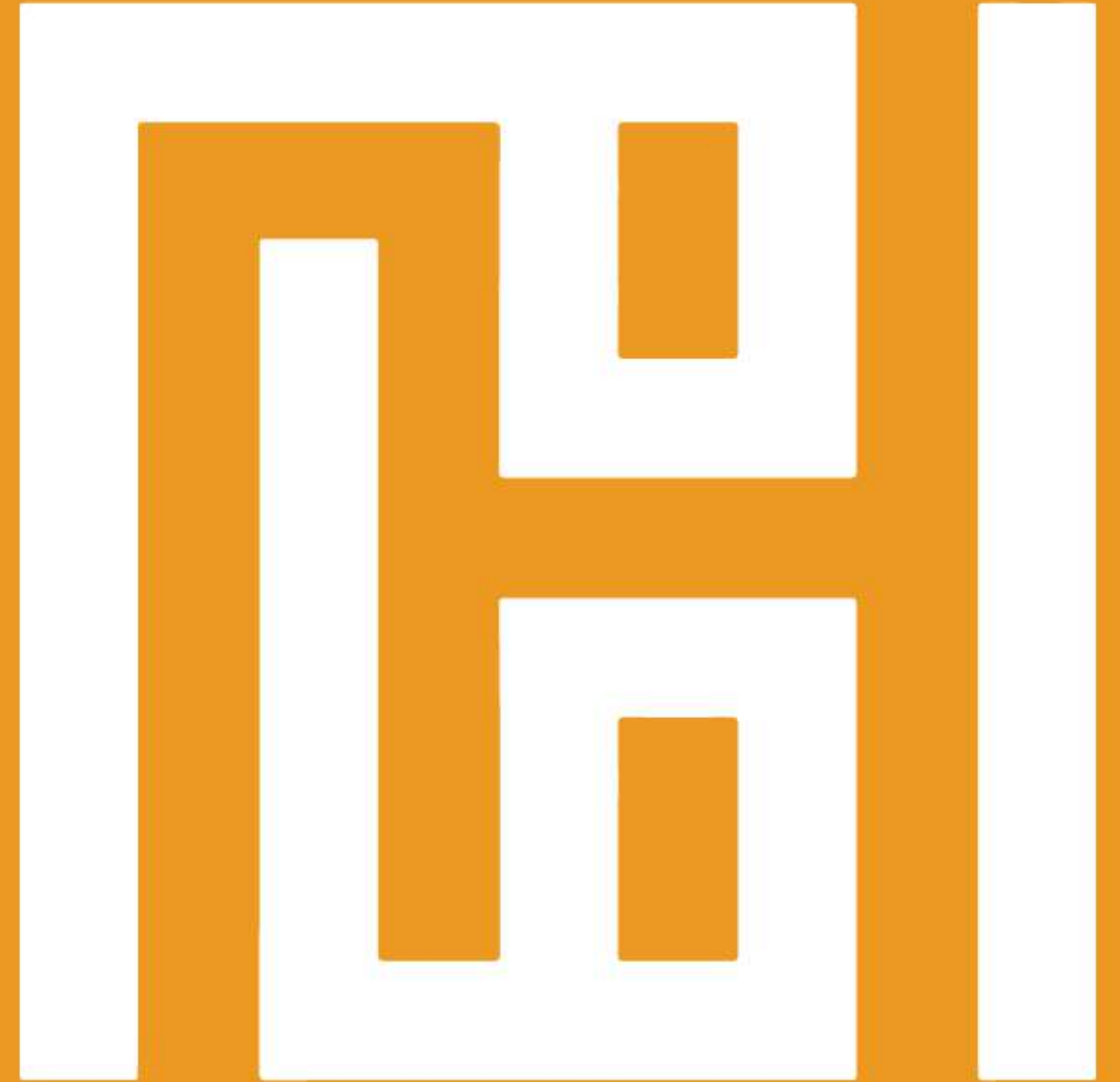


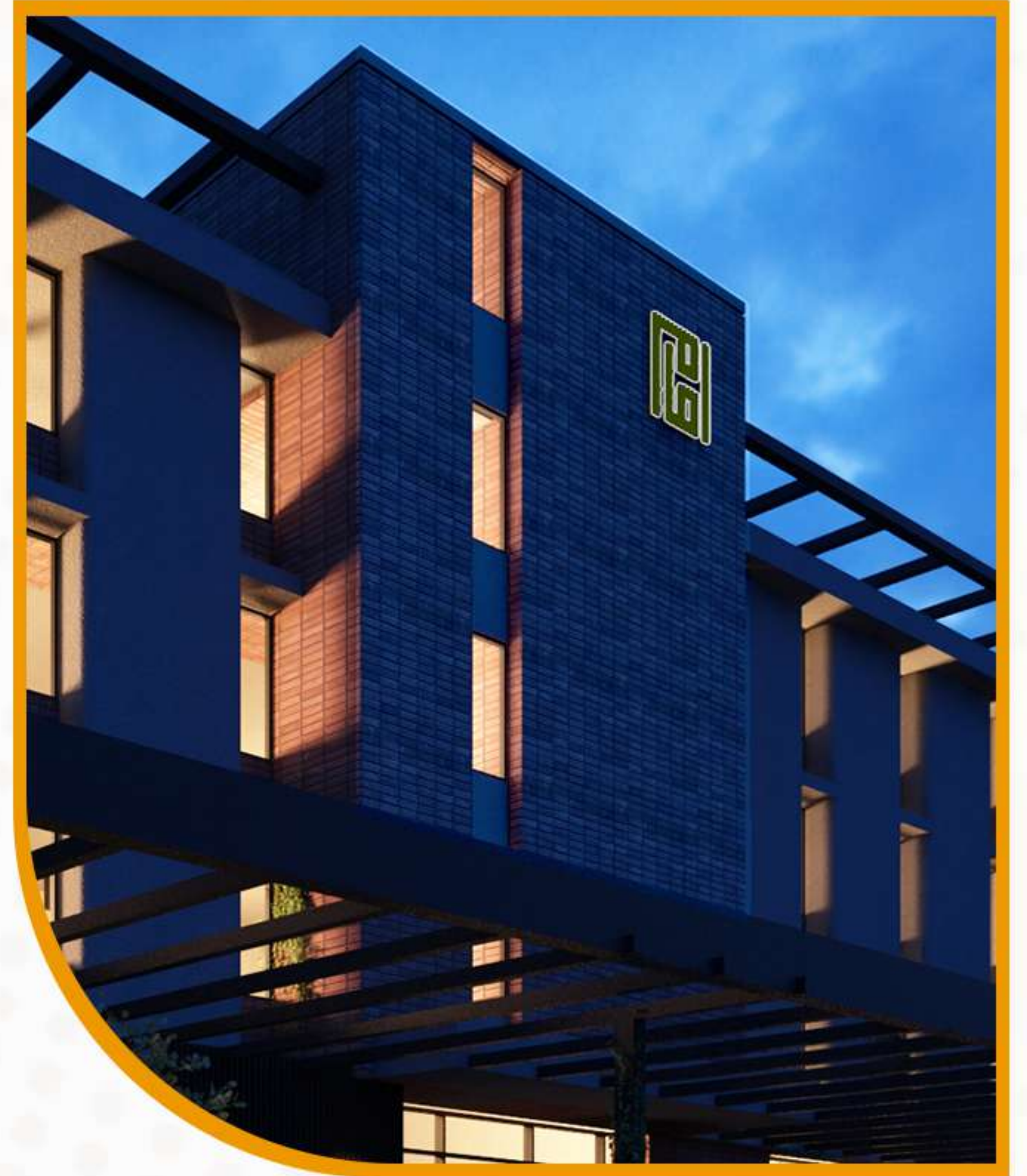
Improving  
**Healthcare.**

Improving  
**Lives.**



# About Us

Established in 1973, Imam Clinic, now a 100 bedded hospital facility cherishes its tradition of hard work and integrity with the trust of numerous patrons, maximizing its vision for improved healthcare. Over the span of 50 years, our team of doctors have strongly exercised evidence-based medical practices, and continue to practice empathy in their service ensuring all CME (Continuous Medical Education) standards. Imam Clinic is catering to the health and medication needs of a population of more than three million in the heart of District Central Karachi, while easily being accessible to everyone from other parts of the city. Located at Five Star Chowrangi, Block I, North Nazimabad.



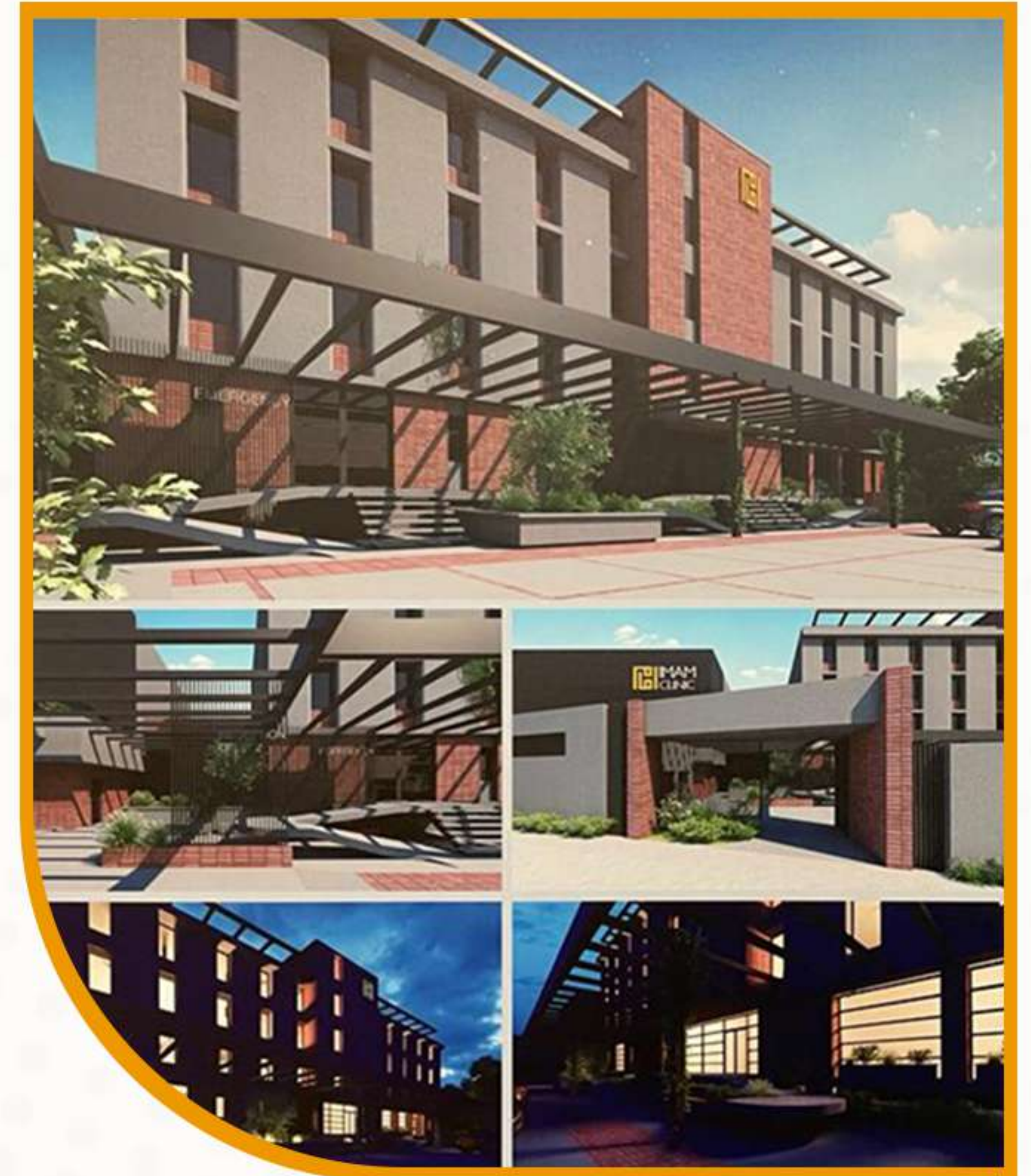
# Vision:

To be chosen by patients and employees for being a leading, educational, research-oriented healthcare facility that provides the most satisfactory and safe experience across all communities.

# Mission:

Imam Clinic believes in contributing to the lives of all communities based on inclusivity and compassion.

- To provide accessible standardised health care facilities.
- To keep empathy as our guiding principle while dealing with patients and families to ensure their satisfaction.
- To foster growth of dynamic and ever improving teams through research and evidence-based practice.
- To improve patient experience via collaborative medical and support services.
- To train our teams for facing stressful situations during infectious disease outbreaks.
- To educate patients and families to deal with diverse health conditions.
- To have a participative approach amongst teams, consultants and management in devising innovative management



# “A legacy Of Healing: Serving Patients For Generations”



**ER**  
2.1 M+  
patients served.



**In Patient**  
250k+  
admissions.



**ICU**  
50k+  
admissions.



**NICU**  
100k+  
neonates treated.



**Radiology**  
1.5 M+  
patients served.



**Consultancy**  
5 M+  
patients served.



**OT**  
100k+  
surgeries performed.

# Specialities We Offer



Gynecology &  
obstetrics



General medicine



Pediatric surgery



Pediatrics &  
neonatology



General Surgery



Cardiology



Rheumatology



Nephrology



Gastroenterology



Clinical Psychology



Psychiatry



Hematology



Pain management



Speech therapy



Nutrition



Vaccination center



Pulmonology



Endocrinology



Neurology



Dermatology



Thoracic surgery



Neuro surgery



Trauma &  
Orthopedics



Plastic surgery



Oral & Maxillofacial  
Surgery



Urology &  
Urogynecology



ENT



Ophthalmology



Anaesthesia  
Pre-op Assessment

# Our Services at a Glance



**24 Hours Emergency Services for all above mentioned specialities.**



**ICU & NICU facilities.**



**24 Hours Radiology services, (Xray, CT scan  
Ultrasound, Color Doppler, Echocardiography)**



**Out Patient Department.**



**24 Hours Clinical Laboratory and  
Blood bank Services.**



**24 Hours Pharmacy services.**



**Physiotherapy.**



**In patient services for all above  
mentioned specialities, including in patient  
dialysis.  
(wards, semi private & private rooms)**



# CT Scan Services

The only **latest technology 32 slicer** available in district central.

- Ultra fast Caramics detector (UFC) - the industry leading detector material - also used in out top of the line scanner delivers crystal clear images.

- Combined Applications to Reduce Exposure (CARE) - enable patients to receive the right dose for their imaging requirements.

- Adaptive Signal Boost - reduces image noise by up to 50% e.g. when imaging obese patients or patients with metal implants.

- Fully Assisting Scanner Technologies (FAST) - optimizes your process efficiency.

# New & Improved OT Complex



An all new improved operation theatre complex with 3 operating rooms, an endoscopy suite, recovery bay, and CSSD.

A wide-angle photograph of a modern hospital emergency department. The room is brightly lit with recessed ceiling lights. On the left, there are several hospital beds with white metal frames and grey mattresses, separated by vertical metal dividers. In the center, a reception desk with a light wood finish and a white countertop is visible. To the right of the desk, there is a black office chair and a desk with a laptop. In the background, a clock is mounted on the wall, and a medical monitor is visible on a stand. The floor is a light-colored, polished tile.

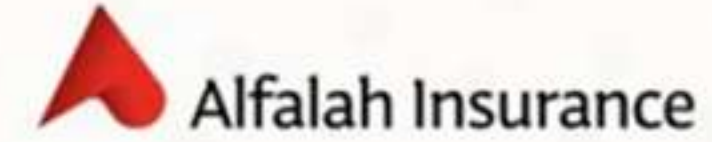
# Ongoing *Project*

New and improved 17 bedded accident and emergency department for adults and pediatric patients

# Corporate Clients



Habib Insurance





Thank You